

LOT 287 TWO BEDROOM TOWNHOUSES

Specification

Living room, dining room and bedrooms

- Wall – painted stucco
- Flooring – wood

Kitchen

- Wall – painted stucco
- Flooring – composite stone
- Furniture – birch faced and composite stone
- Appliances:
 - Microwave oven
 - Main oven
 - Ceramic hob
 - Extractor fan
 - Refrigerator
 - Dishwasher

Bathrooms

Wc

- Wall – painted stucco
- Flooring – wood
- Stone wash basin
- Sanitaryware by Catalano or GSI

Main en-suite bathroom

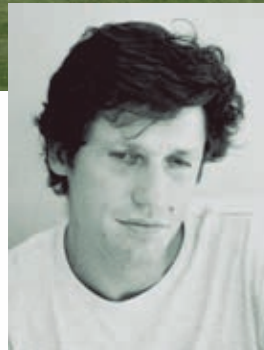
- Wall – painted stucco
- Flooring – marble
- White ceramic wash basin
- Sanitaryware by Catalano or GSI

Bathroom

- Wall – painted stucco
- Flooring – marble
- White ceramic wash basin
- Sanitaryware by Catalano or GSI

Miscellaneous

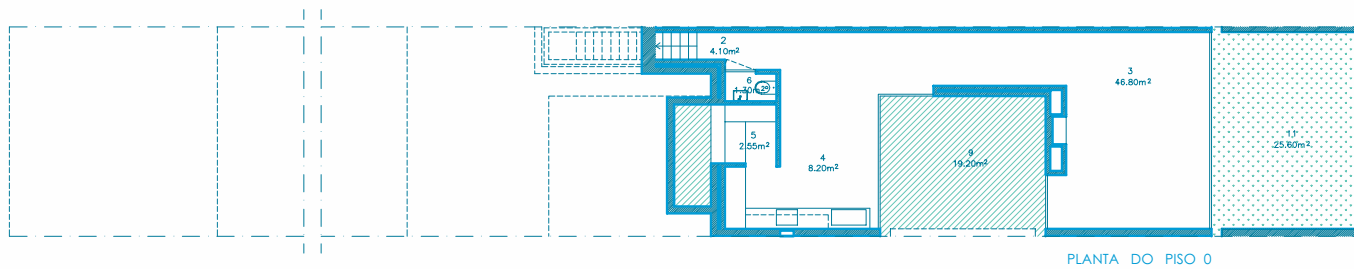
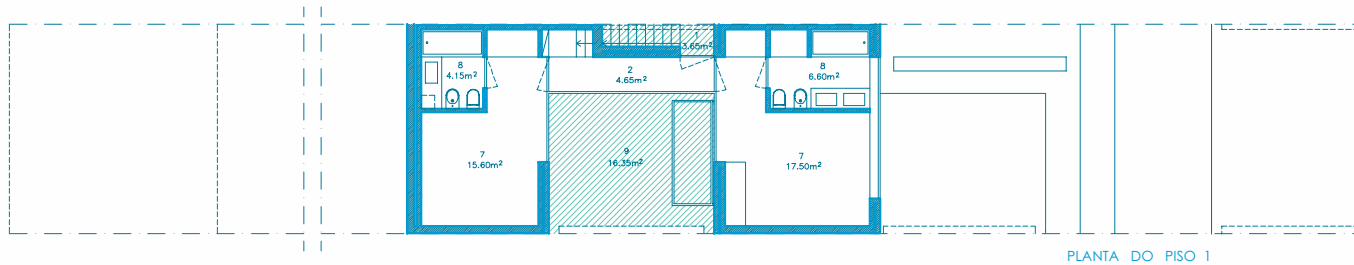
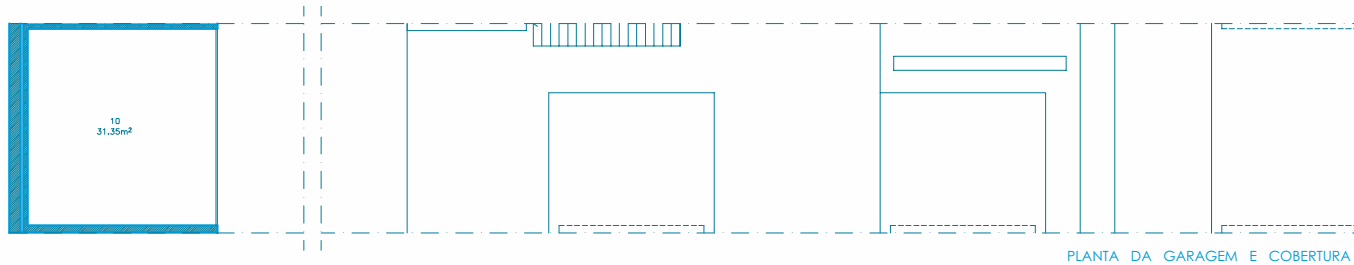
- Air conditioning
- Cable TV infrastructure
- Security alarm
- Broadband internet infrastructure
- Communal swimming pool for each lot
- Automatic roof irrigation system
- Fireplace or stove



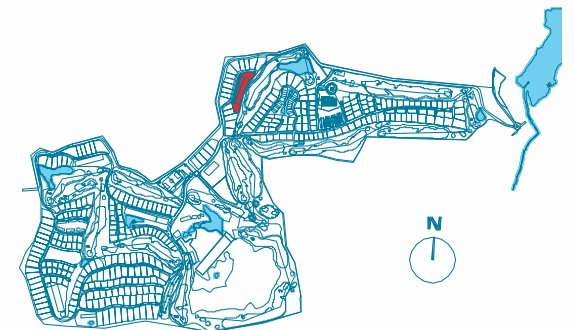
“The series of courtyards that characterise the project allow the houses to receive daylight from various directions in comparison to townhouses that are exposed to only two directions.”

J.P. Falcão de Campos
Architect

Photographs are illustrative only. Details and specification may be subject to variation and should not form part of any contract.



1. HALL
2. HALLWAY/STAIRS
3. LIVING AND DINING ROOM
4. KITCHEN
5. LAUNDRY
6. WC
7. SUITE
8. BATHROOM
9. TERRACE
10. PARKING LOT
11. GARDEN



Architectural plan not yet adapted to engineering plans. Subject to changes.